



**Fiscal Year 2009**



## Stormwater Utility

### Project Report

Mink Point

**Project Number:** 2004-06

**Start Month/Year:** November 2007

**Completion Month/Year:** July 2008

**Project Cost:** \$427,287

**Tax District:** 100 - Port Royal Island

**Council District:** 9

**Drainage/Water Quality Issue:** The primary outfall ditch for this subdivision was wide, deep, and a safety hazard. Also, the access and easements for the drainage system within the subdivision were narrow and preventing the ditches from being routinely cleaned out.

**Resolution:** This project mowed 600 feet of outfall ditch, cleared 2,460 feet of outfall ditch and maintenance access, cleaned out 1,530 feet of roadside ditch, 1,080 feet of outfall ditch, and 90 feet of lateral ditches. The Utility also installed eleven catch basins, one crossline pipe, five access pipes, 2,610 feet of outfall pipe, 370 feet of lateral/outfall pipe, nine stone basins, upsized one driveway pipe, extended one driveway pipe, and cleaned out eleven driveway pipes. In addition, the Utility installed stones and applied grass for stabilization.

**Area Benefited:** The project allowed the subdivision's drainage system to be routinely maintained and provided drainage for surrounding roads including Dairy Farm Road and a portion of Highway 280.

**Before**



**During**



**After**







1 inch = 187 feet

**Project:**  
Mink Point  
Map 1

**Activity:**  
Drainage  
Improvement

**Project #:**  
2004-006

**Township:**  
Port Royal Island

**Completed:**  
July 2008

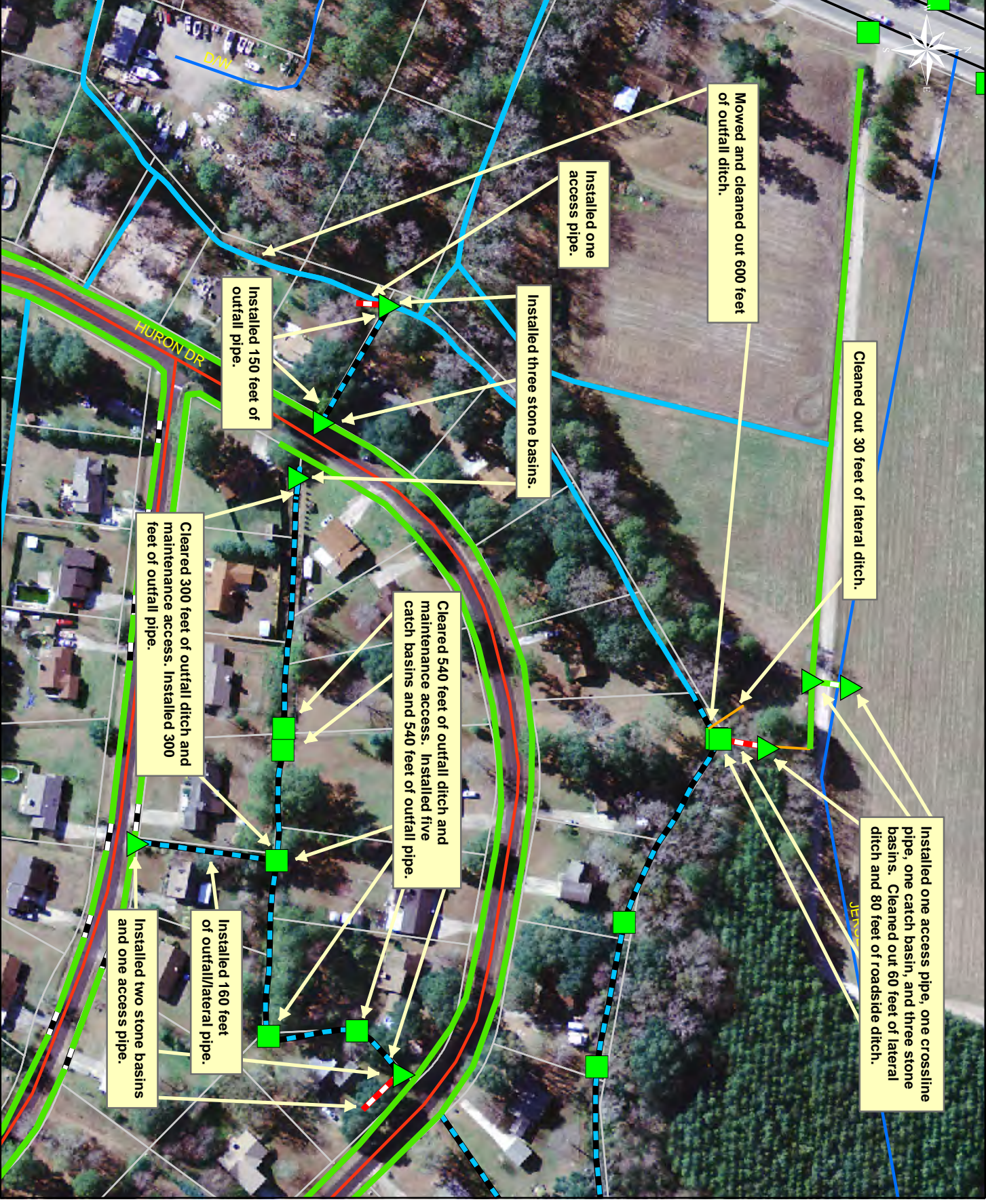
| Legend |                   |
|--------|-------------------|
|        | Rivers            |
|        | Streams           |
|        | Outfall Ditch     |
|        | Lateral           |
|        | Roadside Ditch    |
|        | Road Crossing     |
|        | Driveway Culverts |
|        | Access Pipe       |
|        | Piped Ditch       |
|        | Bleeder Ditch     |
|        | Parcels           |







1 inch = 150 feet



Cleaned out 30 feet of lateral ditch.

Mowed and cleaned out 600 feet of outfall ditch.

Installed one access pipe.

Installed three stone basins.

Installed 150 feet of outfall pipe.

Cleared 300 feet of outfall ditch and maintenance access. Installed 300 feet of outfall pipe.

Cleared 540 feet of outfall ditch and maintenance access. Installed five catch basins and 540 feet of outfall pipe.

Installed one access pipe, one crossline pipe, one catch basin, and three stone basins. Cleaned out 60 feet of lateral ditch and 80 feet of roadside ditch.

Installed two stone basins and one access pipe.  
Installed 160 feet of outfall/lateral pipe.

**Legend**

|  |                   |
|--|-------------------|
|  | Streams           |
|  | Rivers            |
|  | Outfall Ditch     |
|  | Lateral           |
|  | Roadside Ditch    |
|  | Road Crossing     |
|  | Driveway Culverts |
|  | Access Pipe       |
|  | Piped Ditch       |
|  | Bleeder Ditch     |
|  | Parcels           |



Print : 11/10/08

**Project:**  
Mink Point  
Map 2

**Activity:**  
Drainage  
Improvement

**Project #:**  
2004-006

**Township:**  
Port Royal Island

**Completed:**  
July 2008





## Stormwater Utility

### *Project Report*

#### Paige Point Bluff

**Project Number:** 2008-141

**Start Month/Year:** May 2008

**Completion Month/Year:** July 2008

**Project Cost:** \$28,411

**Tax District:** 700 – Sheldon

**Council District:** 6

**Drainage/Water Quality Issue:** Water was overtopping the roadside ditch.

**Resolution:** This project cleared and reconstructed 570 feet of outfall ditch and maintenance access. The Utility also installed one driveway pipe and two access pipes. Additionally, the Utility installed stones and applied grass for stabilization.

**Area Benefited:** This project alleviated flooding and provided drainage for a portion of Paige Point Bluff.

**Before**



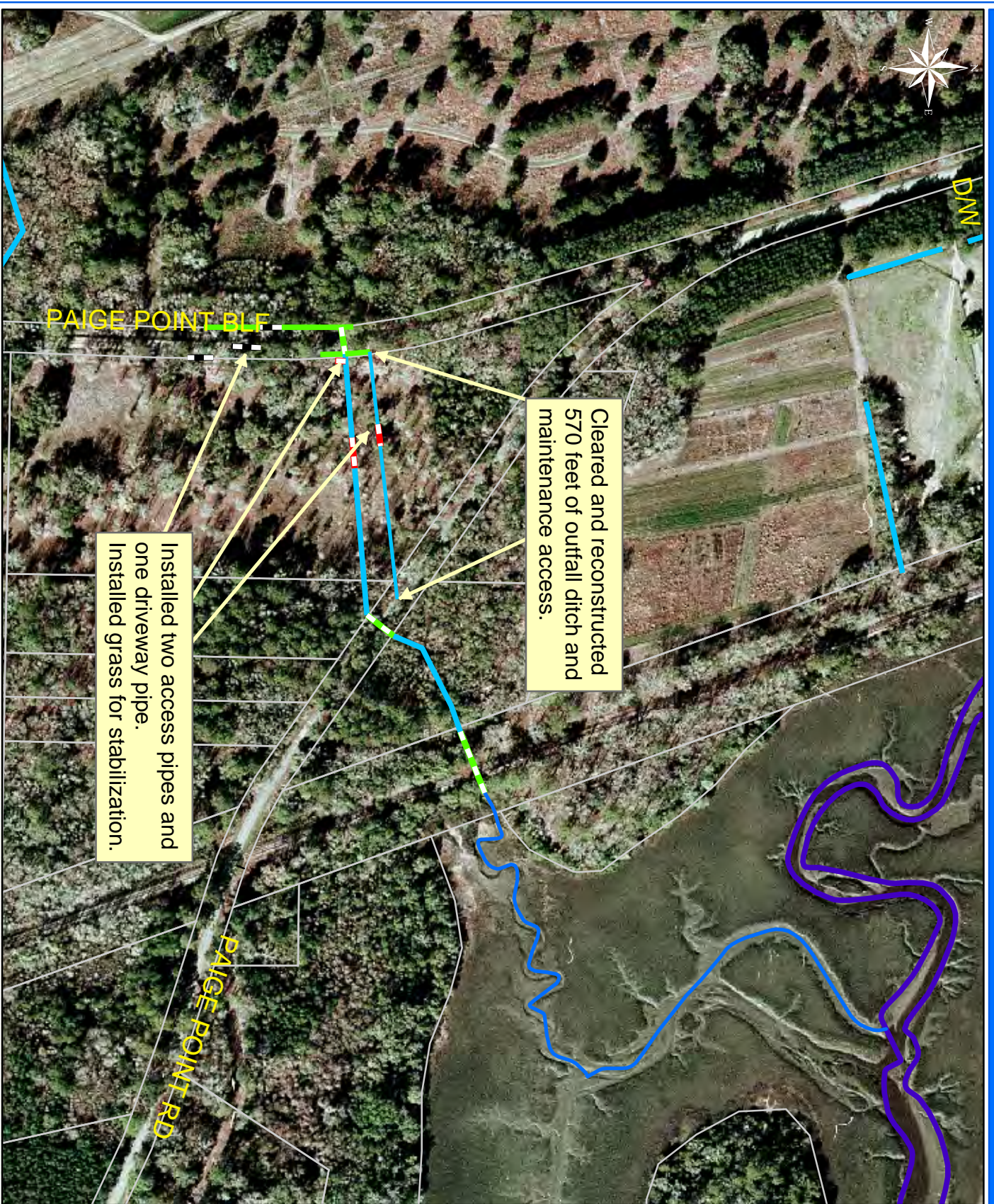
**During**



**After**







**Project:**  
Paige Point Bluff

**Project #:**  
2008-141

**Township:**  
Sheldon

**Completed :**  
July 2008

**Legend**

| Drainage Type |                   |
|---------------|-------------------|
|               | Rivers            |
|               | Streams           |
|               | Outfall Ditch     |
|               | Lateral           |
|               | Roadside Ditch    |
|               | Road Crossing     |
|               | Driveway Culverts |
|               | Access Pipe       |
|               | Piped Ditch       |
|               | Bleeder Ditch     |
|               | Parcels           |

Print Date: 11/26/08





## Stormwater Utility

### *Project Report*

Simmons Road

**Project Number:** 2008-142

**Start Month/Year:** June 2008

**Completion Month/Year:** July 2008

**Project Cost:** \$61,933

**Tax District:** 300 – St. Helena Island

**Council District:** 5

**Drainage/Water Quality Issue:** There was flooding and standing water on Simmons Road and standing water in the outfall ditches.

**Resolution:** This project cleared 2,300 feet and reconstructed 2,300 feet of outfall ditch and maintenance access. The Utility also installed three access pipes, one crossline pipe, and 40 feet of outfall pipe to protect specimen trees. In addition, the Utility cleaned out one crossline pipe, installed stones and applied grass for stabilization.

**Area Benefited:** This project alleviated flooding and provided drainage for Simmons Road and surrounding properties.

**Before**



**During**



**After**





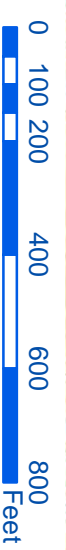


Cleared and reconstructed 650 feet of outfall ditch and maintenance access. Installed stones and applied grass for stabilization.

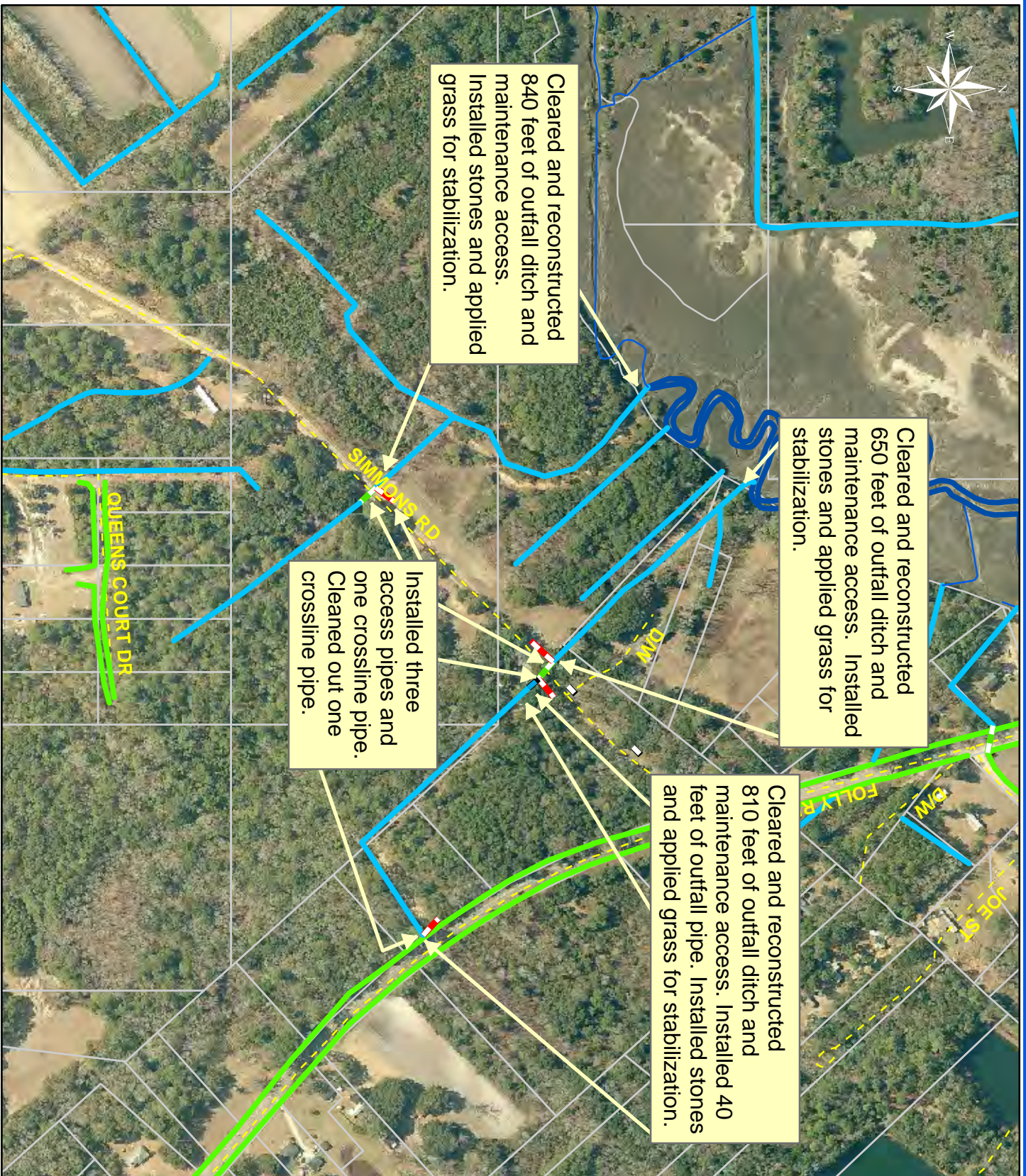
Cleared and reconstructed 840 feet of outfall ditch and maintenance access. Installed stones and applied grass for stabilization.

Cleared and reconstructed 810 feet of outfall ditch and maintenance access. Installed 40 feet of outfall pipe. Installed stones and applied grass for stabilization.

Installed three access pipes and one crossline pipe. Cleaned out one crossline pipe.



1 inch = 337 feet



| Legend        |               |
|---------------|---------------|
| Drainage Type |               |
|               | River         |
|               | Stream        |
|               | Outfall       |
|               | Lateral       |
|               | Lateral Pipe  |
|               | Roadside      |
|               | Roadside Pipe |
|               | Road Pipe     |
|               | Crossline     |
|               | D/W           |
|               | Access        |
|               | Piped         |
|               | Bleeder       |
|               | Parcels       |

**Project:**  
Simmons Road

**Activity:** Drainage  
Maintenance

**Project #:**  
2008-142

**Township:**  
St. Helena Island

**Completed:**  
July 2008





## Stormwater Utility

### *Project Report*

Town of Bluffton - Bluffton Parkway

---

**Project Number:** 2008-144

**Start Month/Year:** June 2008

**Completion Month/Year:** July 2008

**Project Cost:** \$36,473

**Tax District:** 610 – Town of Bluffton

**Council District:** 4

**Drainage/Water Quality Issue:** There was standing and stagnant water in the outfall ditch.

**Resolution:** This project cleared 670 feet of outfall ditch, cleared 600 feet of maintenance access, and reconstructed 870 feet of outfall ditch and maintenance access. The Utility also installed one access pipe and two property drain pipes. Lastly, the Utility installed stones for stabilization.

**Area Benefited:** This project provided drainage for portions of the Bluffton Parkway, Buck Island Road, and surrounding properties.

**Before**



**During**



**After**







Installed two property drain pipes and one access pipe.

Cleared 670 feet of outfall ditch. Reconstructed 600 feet of maintenance access. Reconstructed 870 feet of outfall ditch and maintenance access. Installed stones for stabilization.

**Project:**  
Town of Bluffton - Bluffton Parkway

**Activity:** Drainage Maintenance

**Project #:** 2008-144

**Township:** Town of Bluffton

**Completed:** July 2008

| Legend        |                   |
|---------------|-------------------|
| Drainage Type |                   |
|               | Rivers            |
|               | Streams           |
|               | Outfall Ditch     |
|               | Lateral           |
|               | Roadside Ditch    |
|               | Roadside Pipe     |
|               | Road Crossing     |
|               | Driveway Culverts |
|               | Access Pipe       |
|               | Piped Ditch       |
|               | Bleeder Ditch     |
|               | Parcels           |

1 inch = 430 feet



Print date: 11/26/08





## Stormwater Utility

### *Project Report*

Town of Hilton Head Island - Firethorn Lane

**Project Number:** 2008-138

**Start Month/Year:** July 2008

**Completion Month/Year:** July 2008

**Project Cost:** \$21,988

**Tax District:** 510 – Town of Hilton Head Island

**Council District:** 3

**Drainage/Water Quality Issue:** There was standing water on the road.

**Resolution:** This project replaced 40 feet of outfall pipe. The Utility also cleaned out 160 feet of outfall pipe, one crossline pipe, and three catch basins.

**Area Benefited:** This project alleviated the standing water and provided drainage for portions of Firethorn Lane and South Forest Beach Drive.

**Before**



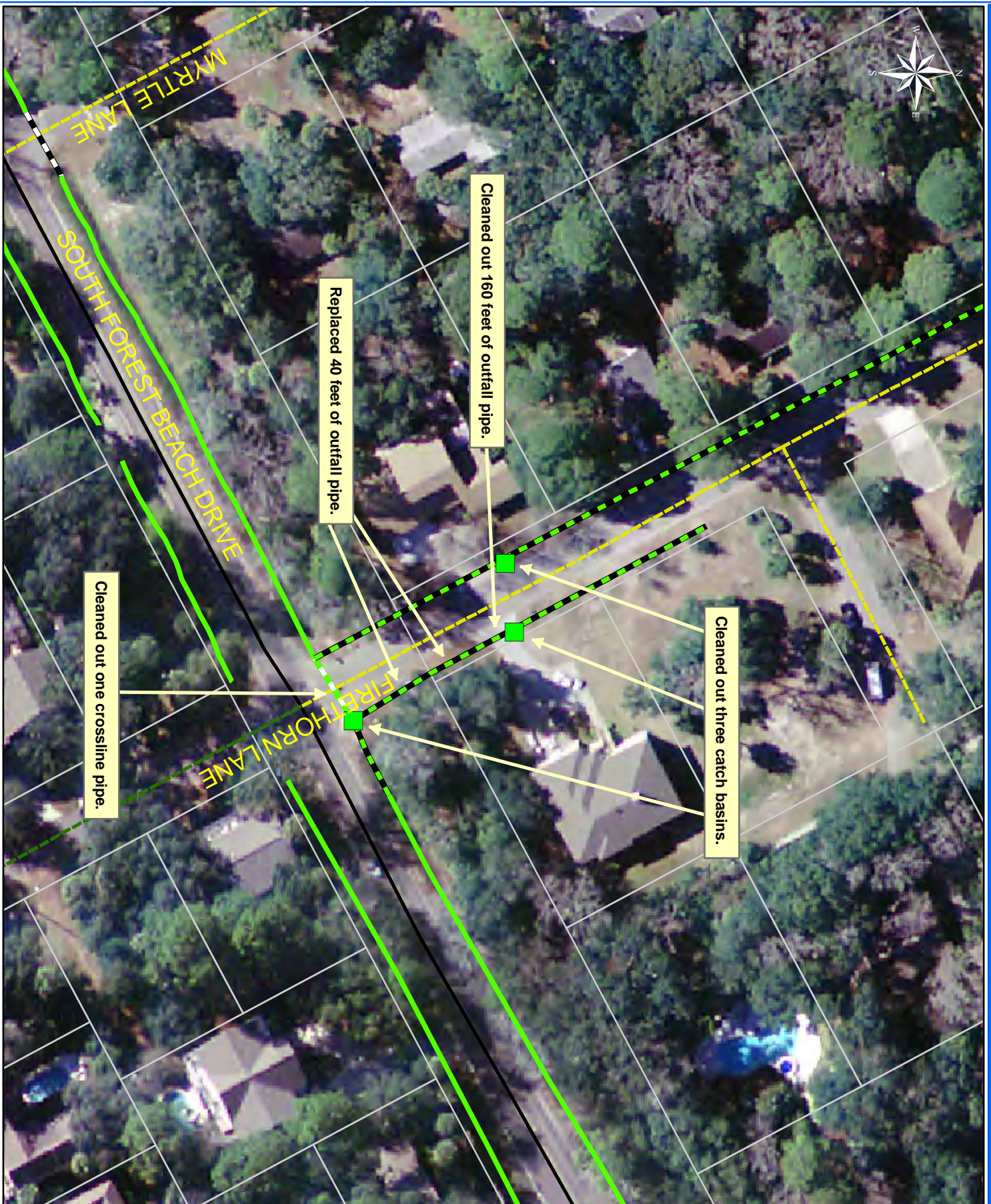
**During**



**After**







1 inch = 69 feet

**Project:** Town of Hilton Head Island - Firehorn Lane

**Activity:** Drainage Maintenance

**Project #:** 2008-138

**Township:** Town of Hilton Head Island

**Completed:** July 2008

| Legend               |                   |
|----------------------|-------------------|
|                      | Parcels           |
| <b>Drainage Type</b> |                   |
|                      | Rivers            |
|                      | Streams           |
|                      | Outfall Ditch     |
|                      | Lateral           |
|                      | Roadside Ditch    |
|                      | Roadside Pipe     |
|                      | Road Crossing     |
|                      | Driveway Culverts |
|                      | Access Pipe       |
|                      | Piped Ditch       |
|                      | Bleeder Pipe      |
|                      | Easements         |

Print Date: 3/4/08





## Stormwater Utility

### *Project Report*

#### Windy Lakes Subdivision

**Project Number:** 2005-99

**Start Month/Year:** May 2008

**Completion Month/Year:** July 2008

**Project Cost:** \$165,030

**Tax District:** 600 – Bluffton

**Council District:** 4

**Drainage/Water Quality Issue:** The cul-de-sac within Windy Lakes' subdivision was flooding.

**Resolution:** The Utility cleared 1,360 feet of outfall ditch and maintenance access, hand cleared 1,390 feet of outfall ditch, reconstructed 970 feet of outfall ditch, and cleaned out 470 feet of roadside ditch. This project also installed 620 feet of outfall pipe, two catch basins, and upsized eight driveway pipes to correct elevation. Additionally, the Utility cleaned out one crossline pipe and repaired a washout. The Utility also installed grass to reestablish property owner's yard and for stabilization. Lastly, the Utility installed stones and applied grass for stabilization.

**Area Benefited:** This project alleviated flooding and provided drainage for portions of Sugaree Drive and surrounding properties.

**Before**



**During**



**After**





**Project:**  
Windy Lakes

**Activity:** Ditch  
Maintenance

**Project #:** 2005-99

**Township:**  
Bluffton

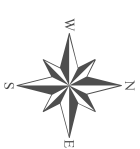
**Completed:**  
July 2008

**Legend**

**Drainage Type**

- Rivers
- Streams
- Outfall Ditch
- Lateral
- Roadside Ditch
- Roadside Pipe
- Road Crossing
- Driveway Culverts
- Access Pipe
- Piped Ditch
- Bleeder Ditch
- Parcels

172



Upsized eight driveway pipes to correct elevation and repaired a washout.

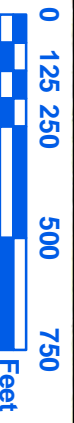
Cleared 1,360 feet of outfall ditch and maintenance access. Reconstructed 970 feet of outfall ditch.

Installed 620 feet of outfall pipe and two catch basins.

Cleaned out 470 feet of roadside ditch. Installed stones and applied grass for stabilization.

Cleaned out one crossline pipe.

Hand cleared 1,390 feet of outfall ditch.



1 inch = 430 feet





## Stormwater Utility

### *Project Report*

Hickory Hill Road

**Project Number:** 2008-145

**Start Month/Year:** July 2008

**Completion Month/Year:** August 2008

**Project Cost:** \$24,031

**Tax District:** 300 – St. Helena Island

**Council District:** 5

**Drainage/Water Quality Issue:** After Hickory Hill Road was paved, the increase in rainwater runoff caused a washout at the discharge end of the outfall ditch. Also the access and easement for the drainage system were narrow, preventing the ditch near a property owner's home from being routinely cleaned out.

**Resolution:** This project cleared 220 feet of outfall ditch, repaired a wash out, and replenished stones. The Utility also installed 20 feet of outfall pipe upstream and 80 feet of outfall pipe downstream. Additionally, the Utility applied grass for stabilization.

**Area Benefited:** This project provided drainage for Hickory Hill Road, and portions of Ball Park Road, Bible Camp Road, and surrounding properties.

**Before**



**During**



**After**





**Project:**  
Hickory Hill Road

**Activity:** Drainage  
Maintenance

**Project #:**  
2008-145

**Township:**  
St. Helena Island

**Completed:**  
August 2008



1 inch = 134 feet

| Legend        |               |
|---------------|---------------|
| Drainage Type |               |
|               | River         |
|               | Stream        |
|               | Outfall       |
|               | Lateral       |
|               | Lateral Pipe  |
|               | Roadside      |
|               | Roadside Pipe |
|               | Road Pipe     |
|               | Crossline     |
|               | D/W           |
|               | Access        |
|               | Piped         |
|               | Bleeder       |
|               | Parcels       |





## Stormwater Utility

### *Project Report*

#### William Jenkins Road Outfall

**Project Number:** 2004-98

**Start Month/Year:** January 2008

**Completion Month/Year:** August 2008

**Project Cost:** \$58,852

**Tax District:** 300 – St. Helena Island

**Council District:** 5

**Drainage/Water Quality Issue:** Once the owner decided to build on their property, an outlet to drain the rainwater runoff from William Jenkins Road would have been eliminated. The owner notified the County and it would have had to either install pipes in the existing ditch running through their property or have had the ditch realigned to the edge of the property line to continue to drain William Jenkins Road.

**Resolution:** Project cleared 420 feet of outfall ditch and 420 feet of outfall pipes were installed. The Utility also cleaned out 800 feet of roadside ditch, cleaned out one crossline pipe, and upsized three crossline pipes and one access pipe. Grass was applied and stones installed for stabilization.

**Area Benefited:** This project allowed the continuance of providing drainage of William Jenkins Road and a small portion of Fripp Point Road.

**Before**



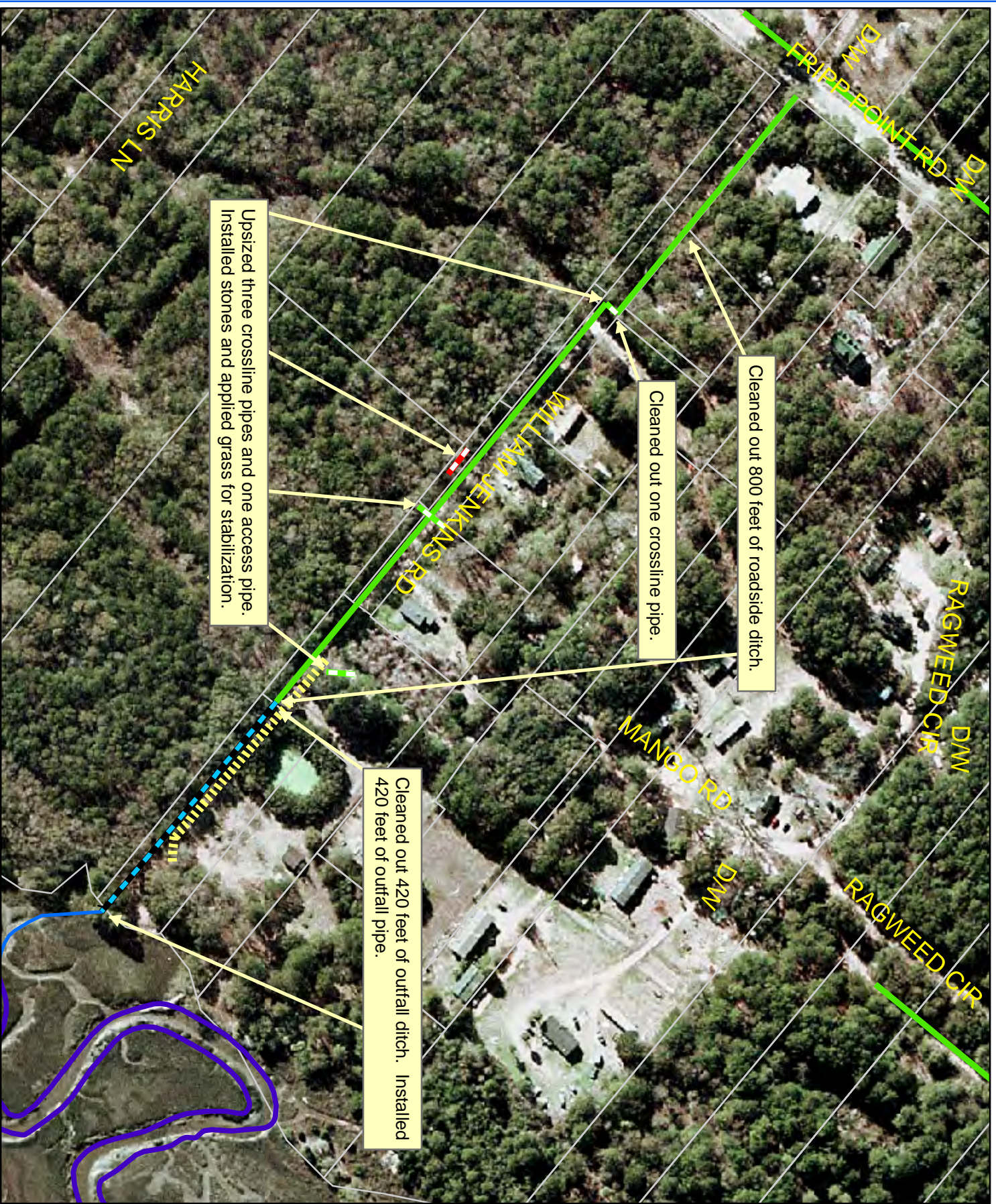
**During**



**After**







1 inch = 201 feet

**Project:**  
William Jenkins  
Road Outfall

**Activity:** Ditch  
Maintenance

**Project #:**  
2004-98

**Township:**  
St. Helena Island

**Completed:**  
August 2008

| Legend        |                   |
|---------------|-------------------|
|               | Parcels           |
| Drainage Type |                   |
|               | Rivers            |
|               | Streams           |
|               | Outfall Ditch     |
|               | Lateral           |
|               | Roadside          |
|               | Road Crossing     |
|               | Driveway Culverts |
|               | Access Pipe       |
|               | Piped Ditch       |
|               | Bleeder Ditch     |







## Stormwater Utility

### *Project Report*

Alumni Road

**Project Number:** 2008-106

**Start Month/Year:** August 2008

**Completion Month/Year:** September 2008

**Project Cost:** \$101,967

**Tax District:** 200 – Lady's Island

**Council District:** 7

**Drainage/Water Quality Issue:** As part of the Highway 802 widening, the contractor reconstructed (widened) the outfall ditch, not leaving enough access for routine maintenance between Alumni Road and Little Capers Road.

**Resolution:** This project mowed 1,450 feet of outfall ditch and maintenance access, cleared 1,360 feet of outfall ditch and maintenance access, reconstructed 1,360 feet of maintenance access, and cleaned out 1,360 feet of outfall ditch. The Utility installed one catch basin, 100 feet of outfall pipe, and four access pipes. Lastly, the Utility installed stones and applied grass for stabilization.

**Area Benefited:** This project provided drainage for Alumni Road, Faculty Drive, and portions of Fairfield Road, Sam's Point Road, and surrounding properties.

**Before**



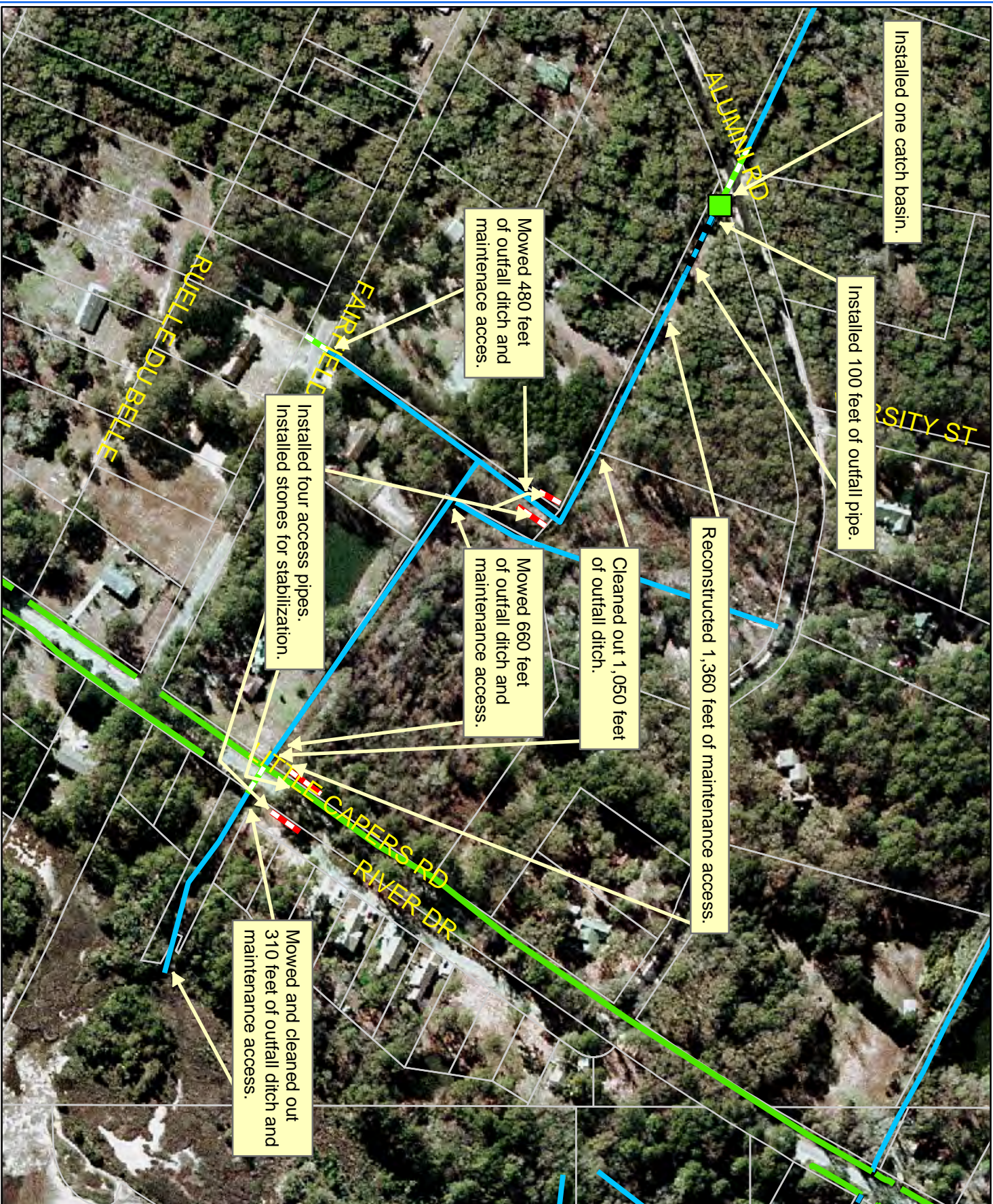
**During**



**After**







**Project:**  
Alumni Road

**Activity:** Drainage  
Maintenance

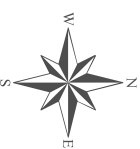
**Project#:**  
2008-106

**Township:**  
Lady's Island

**Completed :**  
September 2008

**Legend**

|  |                   |
|--|-------------------|
|  | Rivers            |
|  | Streams           |
|  | Outfall Ditch     |
|  | Lateral           |
|  | Roadside          |
|  | Road Crossing     |
|  | Driveway Culverts |
|  | Access Pipe       |
|  | Piped Ditch       |
|  | Bleeder Ditch     |
|  | Parcels           |



Print Date: 1/14/08





## Stormwater Utility

### *Project Report*

Town of Hilton Head Island - Mead Lane

**Project Number:** 2009-020

**Start Month/Year:** October 2008

**Completion Month/Year:** October 2008

**Project Cost:** \$88,664

**Tax District:** 510 – Town of Hilton Head Island

**Council District:** 2

**Drainage/Water Quality Issue:** There were sinkholes on the roadside of Mead Lane.

**Resolution:** This project replaced 200 feet of twin crossline pipes and stabilized the roadside. The Utility also installed stones and applied grass for stabilization.

**Area Benefited:** This project provided drainage for portions of Doral Court, Branford Lane, and Mead Lane.

**Before**



**During**



**After**







1 inch = 123 feet

**Project:**  
Town of Hilton  
Head Island - Mead  
Lane

**Activity:**  
Ditch  
Maintenance


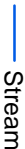

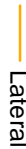
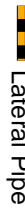
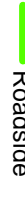
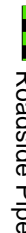
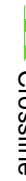

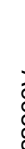
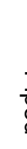


**Project #:**  
2009-020

**Township:**  
Town of Hilton  
Head Island

**Completed:**  
October 2008

**Legend**

**Drainage Type**

-  River
-  Stream
-  Outfall
-  Lateral
-  Lateral Pipe
-  Roadside
-  Roadside Pipe
-  Crossline
-  DMV
-  Access
-  Piped
-  Bleeder
-  Parcels

Date Print: 1/27/09





## Stormwater Utility

### *Project Report*

Huspah Court North

**Project Number:** 2009-023

**Start Month/Year:** October 2008

**Completion Month/Year:** November 2008

**Project Cost:** \$29,708

**Tax District:** 700 – Sheldon

**Council District:** 6

**Drainage/Water Quality Issue:** There was standing water in the outfall ditches.

**Resolution:** This project cleared and reconstructed 800 feet of outfall ditch and maintenance access. The Utility also installed one access pipe and one property drain pipe. Lastly, the Utility installed straw mat and stones and applied grass for stabilization.

**Area Benefited:** This project provided drainage for portions of Huspah Court North and surrounding properties.

**Before**



**During**



**After**





**Project:**  
Huspah Court  
North

**Activity:** Drainage  
Improvement

**Project#:**  
2009-023

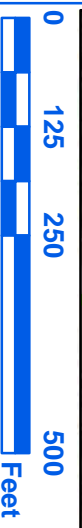
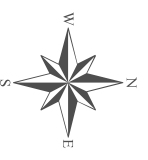
**Township:**  
Sheldon

**Completed :**  
November 2008

**Legend** 182

**Drainage Type**

- Rivers
- Streams
- Outfall Ditch
- Lateral
- Roadside
- Road Crossing
- Driveway Culverts
- Access Pipe
- Piped Ditch
- Bleeder Ditch
- Parcels



1 inch = 220 feet







## Stormwater Utility

### *Project Report*

Town of Hilton Head Island - Jarvis Creek Park

**Project Number:** 2009-046

**Start Month/Year:** November 2008

**Completion Month/Year:** November 2008

**Project Cost:** \$20,334

**Tax District:** 510 – Town of Hilton Head Island

**Council District:** 2

**Drainage/Water Quality Issue:** The outfall ditch had a washout causing trees to be undermined. Also, the piling for the nature trail was at risk of collapsing.

**Resolution:** This project constructed 200 feet of temporary access, cleared 20 feet of outfall ditch, repaired a washout, and reconstructed the flowline. The Utility also transplanted small trees to flowline to disperse flow. Additionally, the Utility installed stones and applied grass for stabilization.

**Area Benefited:** This project provided drainage for a portion of Jarvis Creek Park.

**Before**



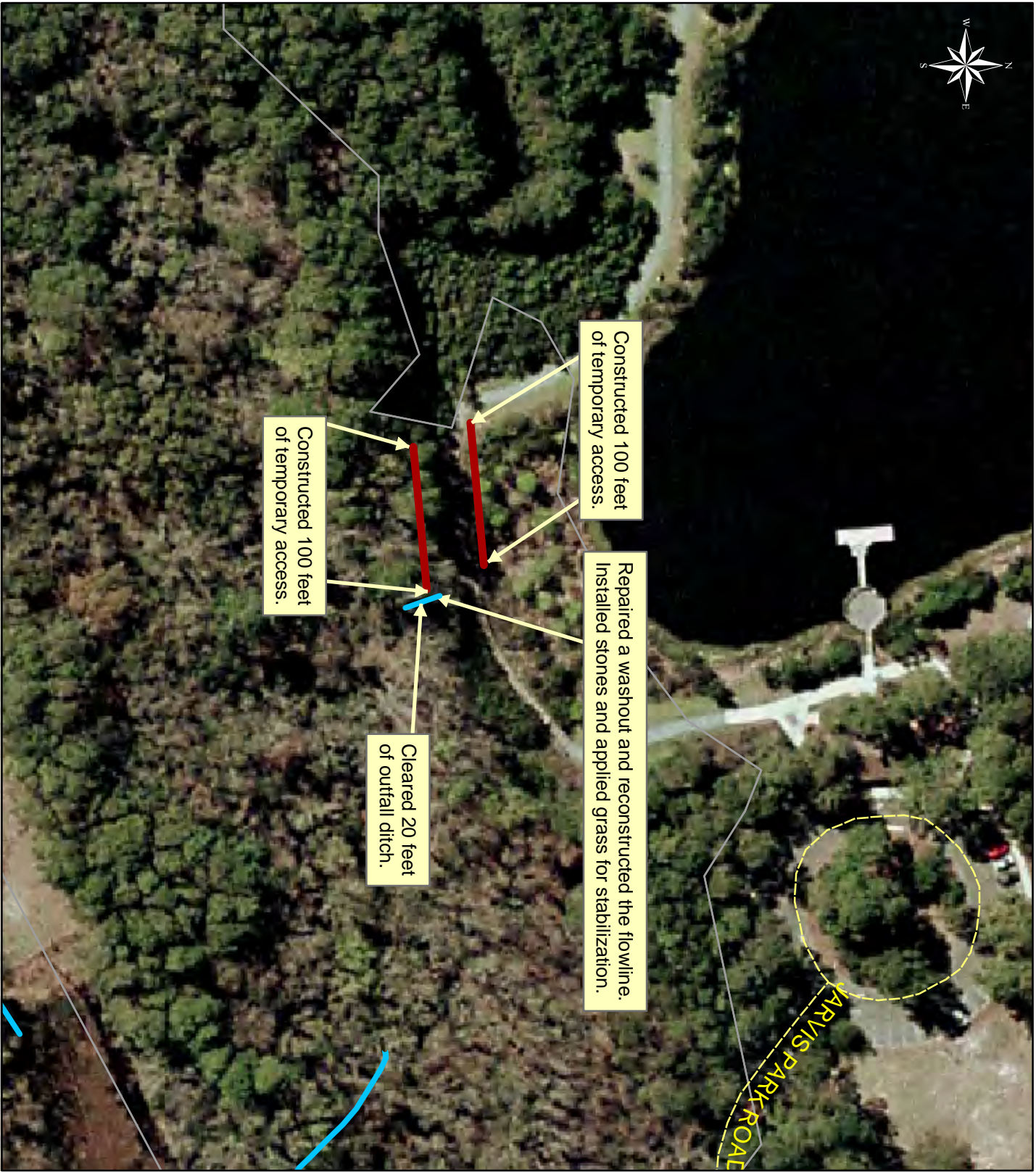
**During**



**After**







1 inch = 104 feet

**Project:**  
Town of Hilton Head  
Island - Jarvis  
Creek Park

**Activity:**  
Repair Washout












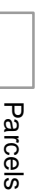
**Project #:** 2009-046

**Township:**  
Town of Hilton  
Head Island

**Completed:**  
November 2008

**Legend**

**Drainage Type**

-  River
-  Stream
-  Outfall
-  Lateral
-  Roadside
-  Roadside Pipe
-  Crossline
-  DW
-  Access
-  Piped
-  Bleeder
-  Parcels

Date Print: 1/27/09





## Stormwater Utility

### *Project Report*

#### Paige Point Bluff

**Project Number:** 2009-041

**Start Month/Year:** November 2008

**Completion Month/Year:** December 2008

**Project Cost:** \$23,858

**Tax District:** 700 – Sheldon

**Council District:** 6

**Drainage/Water Quality Issue:** There was water overtopping the road at every crossline pipe on Paige Point Bluff.

**Resolution:** This project cleaned out 500 feet of roadside ditch. The Utility also upsized two single crossline pipes to two twin crossline pipes, replaced two crossline pipes, installed one crossline pipe, and reinstalled one crossline pipe to the correct elevation. Additionally, the Utility repaired a washout and applied grass for stabilization.

**Area Benefited:** This project alleviated flooding and provided drainage for Paige Point Bluff and surrounding properties.

**Before**



**During**



**After**





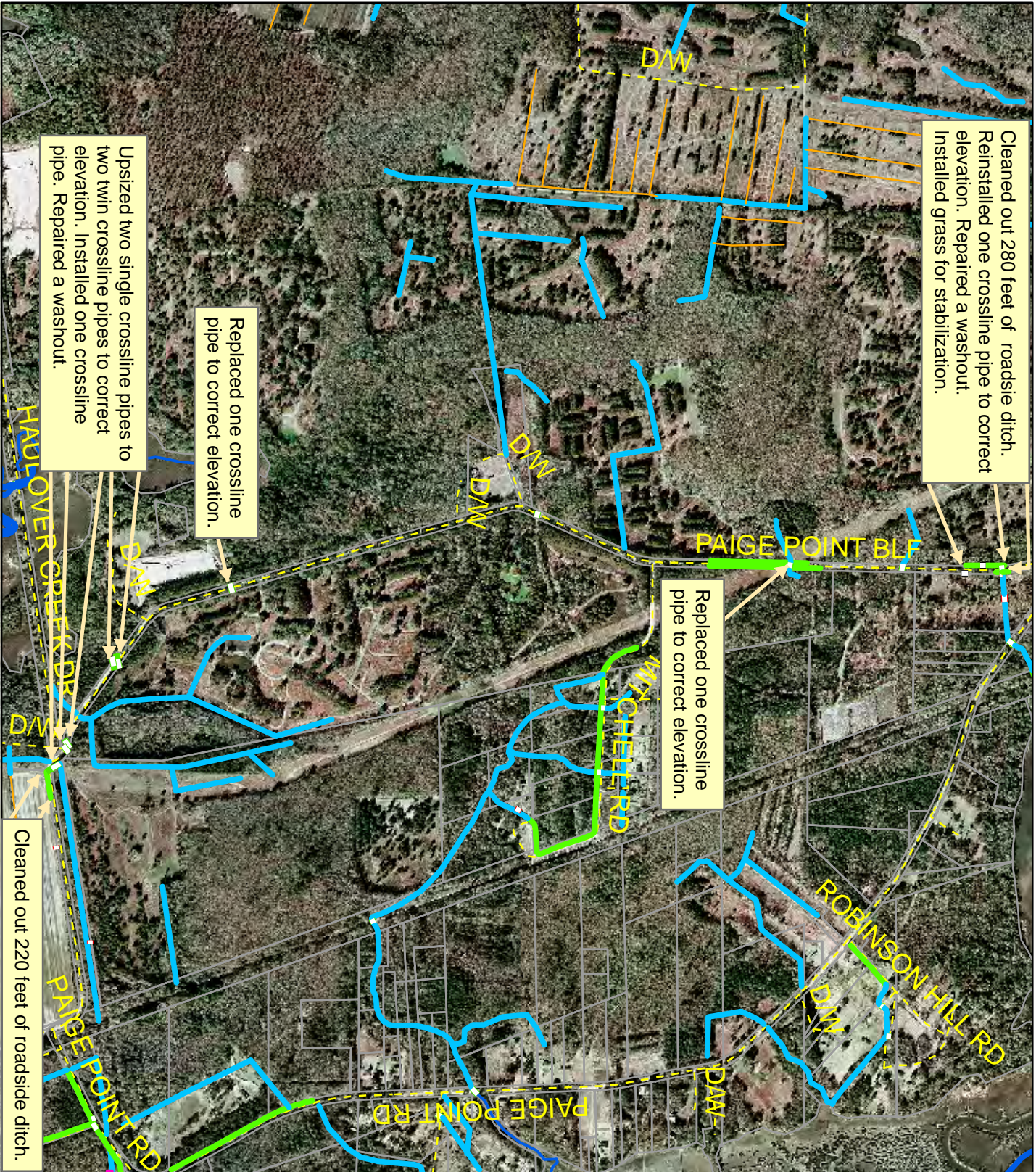
Cleaned out 280 feet of roadside ditch.  
Reinstalled one crossline pipe to correct elevation. Repaired a washout. Installed grass for stabilization.

Replaced one crossline pipe to correct elevation.

Replaced one crossline pipe to correct elevation.

Upsized two single crossline pipes to two twin crossline pipes to correct elevation. Installed one crossline pipe. Repaired a washout.

Cleaned out 220 feet of roadside ditch.



**Project:**  
Paige Point Bluff

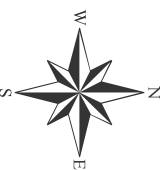
**Activity:** Ditch  
Maintenance

**Project #:** 2009-041

**Township:**  
Sheldon

**Completed:**  
December 2008

| Legend |           |
|--------|-----------|
|        | River     |
|        | Stream    |
|        | Outfall   |
|        | Lateral   |
|        | Roadside  |
|        | Crossline |
|        | D/W       |
|        | Access    |
|        | Piped     |
|        | Bleeder   |
|        | Parcels   |



1 inch = 1,146 feet

Date Print: 01/27/09





## Stormwater Utility

### *Project Report*

White Sands Circle/Shiney Road

**Project Number:** 2008-193

**Start Month/Year:** September 2008

**Completion Month/Year:** December 2008

**Project Cost:** \$33,325

**Tax District:** 300 – St. Helena Island

**Council District:** 5

**Drainage/Water Quality Issue:** There was stagnant water in the outfall ditch because the drainage system had very little fall in elevation.

**Resolution:** This project mowed and cleaned out 4,310 feet of outfall ditch and maintenance access. The Utility also installed three crossline pipes and two access pipes. In addition, the Utility cleaned out three crossline pipes and installed stones and applied grass for stabilization.

**Area Benefited:** This project provided drainage for White Sands Circle, and for portions of Shiney Road and surrounding properties.

**Before**



**During**



**After**







1 inch = 276 feet



**Project:**  
White Sands Circle  
and Shiney Road

**Activity:** Ditch  
Maintenance

**Project #:** 2008-193

**Township:**  
St. Helena Island

**Completed:**  
December 2008

| Legend |           |
|--------|-----------|
|        | River     |
|        | Stream    |
|        | Outfall   |
|        | Lateral   |
|        | Roadside  |
|        | Crossline |
|        | D/W       |
|        | Access    |
|        | Piped     |
|        | Bleeder   |
|        | Parcels   |





## Stormwater Utility

### *Project Report*

#### Gray Road Outfall

**Project Number:** 2009-029

**Start Month/Year:** October 2008

**Completion Month/Year:** January 2009

**Project Cost:** \$76,496

**Tax District:** 700 – Sheldon

**Council District:** 6

**Drainage/Water Quality Issue:** During heavy rain events, there was flooding on a portion of Big Estate Circle and adjacent properties.

**Resolution:** This project cleared and reconstructed 1,250 feet of outfall ditch and maintenance access and cleaned out 2,610 feet of roadside ditch. The Utility also installed four access pipes, upsized one crossline pipe and one driveway pipe. Lastly, the Utility installed stones and applied grass for stabilization.

**Area Benefited:** This project alleviated flooding and provided drainage for portions of Gray Road and Big Estate Circle.

**Before**



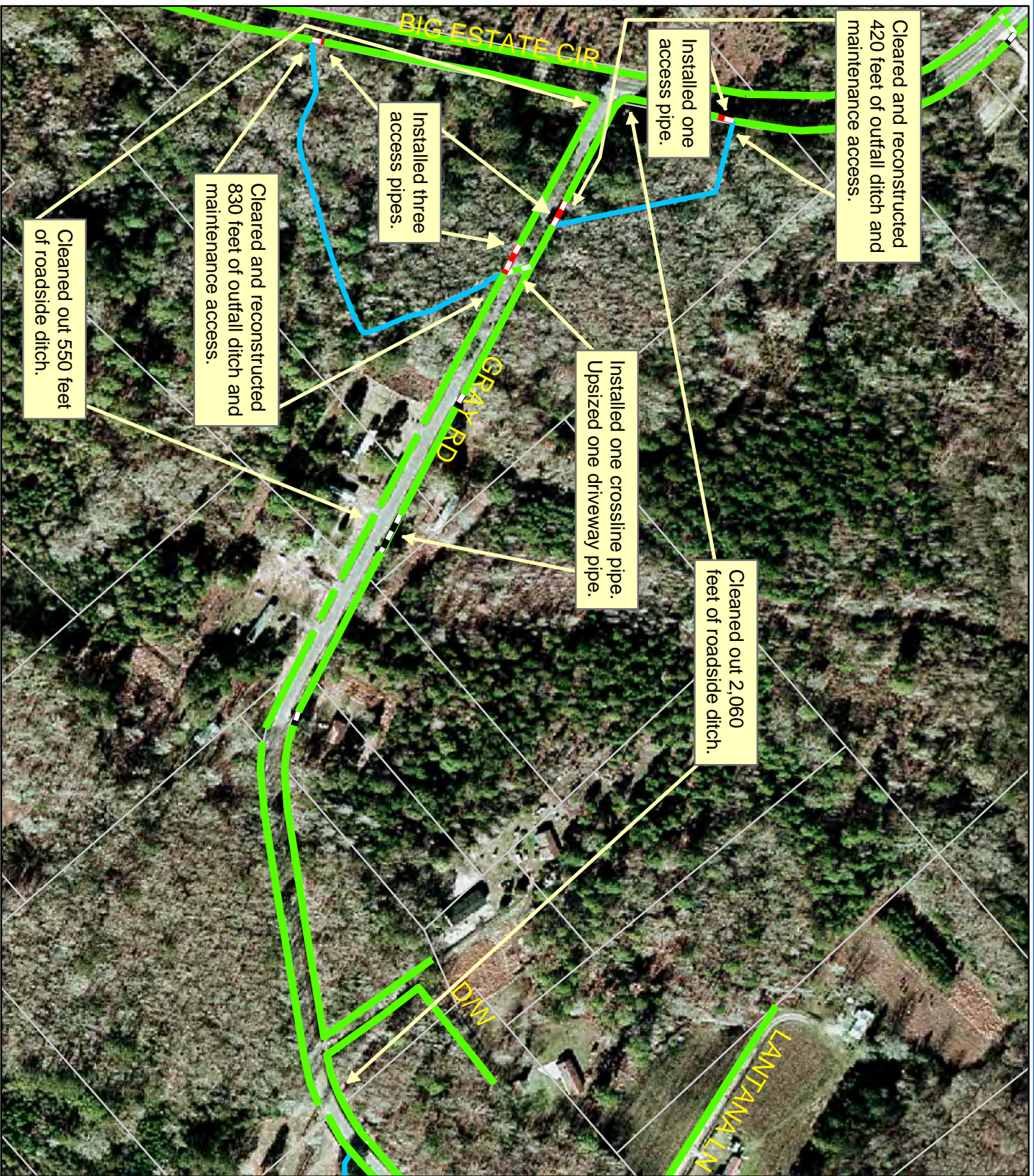
**During**



**After**







**Project:**  
Gray Road Outfall

**Activity:** Drainage Improvement

**Project #:**  
2009-029

**Township:**  
Sheldon

**Completed:**  
January 2009

| Legend |                   |
|--------|-------------------|
|        | Rivers            |
|        | Streams           |
|        | Outfall Ditch     |
|        | Lateral           |
|        | Roadside Ditch    |
|        | Roadside Pipe     |
|        | Road Crossing     |
|        | Driveway Culverts |
|        | Access Pipe       |
|        | Piped Ditch       |
|        | Bleeder Ditch     |
|        | Parcels           |





## Stormwater Utility

### *Project Report*

#### Rail Bed Road Outfall

**Project Number:** 2008-163

**Start Month/Year:** December 2008

**Completion Month/Year:** January 2009

**Project Cost:** \$20,610

**Tax District:** 700 – Sheldon

**Council District:** 6

**Drainage/Water Quality Issue:** During heavy rain events there was flooding on Paige Point Bluff.

**Resolution:** This project cleared 1,450 feet of maintenance access, mowed 1,450 feet of outfall ditch, and cleaned out 40 feet of roadside ditch. The Utility also installed four property drain pipes and one access pipe. Additionally, the Utility installed stones and applied grass for stabilization.

**Area Benefited:** This project alleviated flooding and provided drainage for portions of Rail Bed Road, Paige Point Bluff, Priester Road, and Paige Point Road.

**Before**



**During**



**After**





**Project:**  
 Rail Bed Road  
 Outfall

**Activity:** Ditch  
 Maintenance

**Project #:** 2008-163

**Township:**  
 Sheldon

**Completed:**  
 January 2009



1 inch = 265 feet

| Legend        |           |
|---------------|-----------|
| Drainage Type |           |
|               | River     |
|               | Stream    |
|               | Outfall   |
|               | Lateral   |
|               | Roadside  |
|               | Crossline |
|               | D/W       |
|               | Access    |
|               | Piped     |
|               | Bleeder   |
|               | Parcels   |





## Stormwater Utility

### *Project Report*

#### Sheldon Bush Hog

**Project Number:** 2009-148

**Start Month/Year:** December 2008

**Completion Month/Year:** January 2009

**Project Cost:** \$29,545

**Tax District:** 700 – Sheldon

**Council District:** 6

**Drainage/Water Quality Issue:** The drainage infrastructure requires periodic mowing maintenance to function as designed. This controls woody growth (trees) and prevents blockages that could require a major cleaning effort due to system failure and damage to surrounding areas.

**Resolution:** Routine maintenance was completed for 55,590 feet of maintenance access, 6,470 feet of outfall ditches, and 17,810 feet of roadside ditches within the drainage system in the Sheldon area.

**Area Benefited:** This project provided routine maintenance for the following areas: Archie Sumpter Road, Honeybee Road, Stroup Road, Huspah Road, River Oak Road, Oakhurst Road, Wimbee Landing Road, Albertha Fields Circle, Middle Field Circle, Stroban Road, Coaker Lane Outfall, Cuthbert Farm Road, Bailey Road, Twickenham Plantation Road, Joseph Lane, Mitchell Drive, George Williams Lane, Horse Pen Road, Gum Tree Lane, Browns Island Road, and others.

**Before**



**During**



**After**







## Stormwater Utility

### *Project Report*

Town of Hilton Head Island - Harbor Master

---

**Project Number:** 2009-047

**Start Month/Year:** December 2008

**Completion Month/Year:** January 2009

**Project Cost:** \$54,146

**Tax District:** 510 – Town of Hilton Head Island

**Council District:** 3

**Drainage/Water Quality Issue:** There was standing water in the roadside ditches on Gloucester Road, New Orleans Road, and Pensacola Place. There was also standing water in the outfall ditches and surrounding properties.

**Resolution:** This project cored a thirty-six inch opening in an existing catch basin, replaced 190 feet of outfall pipe, and repaired three sections of waterline. The Utility also extended 10 feet of complex culvert pipe and installed stones and grass for stabilization.

**Area Benefited:** This project alleviated the standing water and provided drainage for portions of Gloucester Road, New Orleans Road, Pensacola Place, and surrounding properties.

**Before**



**During**



**After**





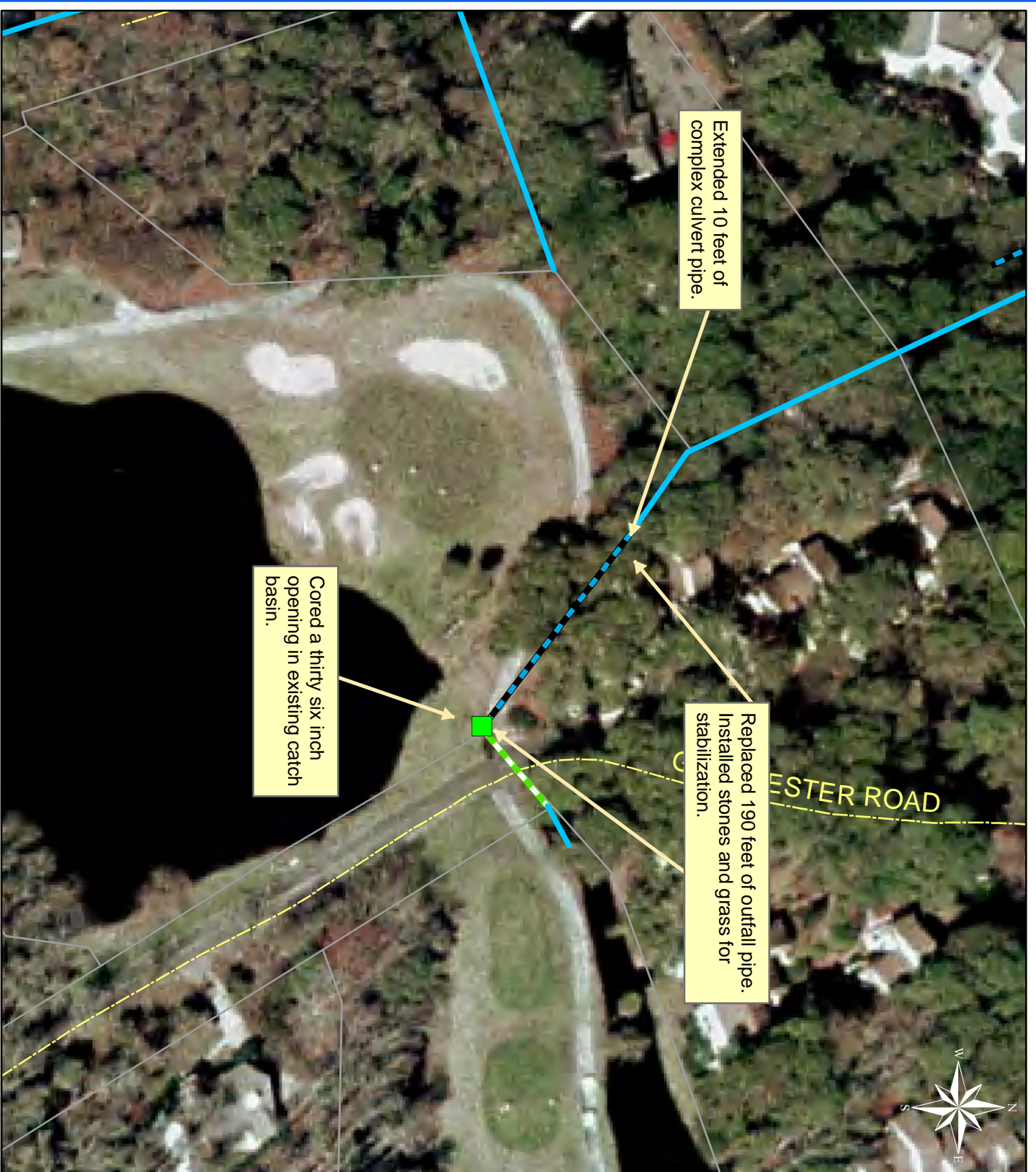
**Project:**  
 Town of Hilton  
 Head Island -  
 Harbor Master

**Activity:**  
 Ditch Maintenance

**Project #:** 2009-047

**Township:**  
 Town of Hilton  
 Head Island

**Completed:**  
 January 2009



1 inch = 83 feet

| Legend        |               |
|---------------|---------------|
| Drainage Type |               |
|               | River         |
|               | Stream        |
|               | Outfall       |
|               | Lateral       |
|               | Roadside      |
|               | Roadside Pipe |
|               | Crossline     |
|               | D/W           |
|               | Access        |
|               | Piped         |
|               | Bleeder       |
|               | Parcels       |





## Stormwater Utility

### *Project Report*

#### Country Manor

**Project Number:** 2005-020

**Start Month/Year:** January 2009

**Completion Month/Year:** February 2009

**Project Cost:** \$52,829

**Tax District:** 100 – Port Royal Island

**Council District:** 6

**Drainage/Water Quality Issue:** A property in the Country Manor subdivision was flooding.

**Resolution:** This project cleaned out 900 feet of outfall ditch and reconstructed 1,500 feet of outfall ditch and maintenance access. The Utility also installed three access pipes. Lastly, the Utility installed stones and applied grass for stabilization.

**Area Benefited:** This project alleviated the flooding and provided drainage for portions of Shanklin Road and surrounding properties.

**Before**



**During**



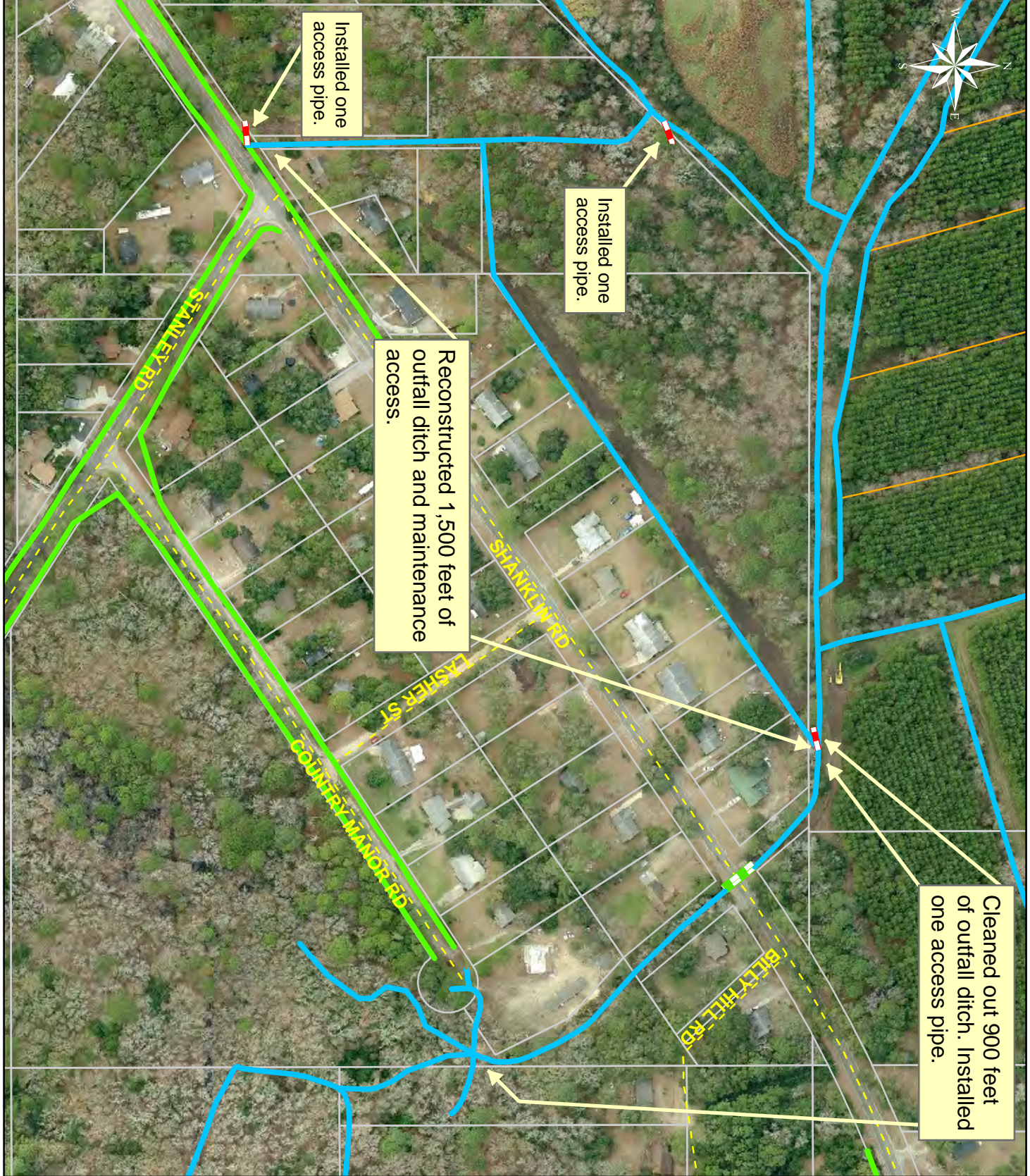
**After**







1 inch = 226 feet



Cleaned out 900 feet of outfall ditch. Installed one access pipe.

Reconstructed 1,500 feet of outfall ditch and maintenance access.

Installed one access pipe.

Installed one access pipe.

**Project:**  
Country Manor Estates

**Activity:** Drainage Maintenance

**Project #:**  
2005-020

**Township:**  
Port Royal Island

**Completed:**  
February 2009

| Legend        |               |
|---------------|---------------|
| Drainage Type |               |
|               | River         |
|               | Stream        |
|               | Outfall       |
|               | Lateral       |
|               | Lateral Pipe  |
|               | Roadside      |
|               | Roadside Pipe |
|               | Crossline     |
|               | DW            |
|               | Access        |
|               | Piped         |
|               | Bleeder       |
|               | Parcels       |

Date Print: 1/27/09





## Stormwater Utility

### *Project Report*

#### Harding Street Outfall

**Project Number:** 2009-082

**Start Month/Year:** December 2008

**Completion Month/Year:** February 2009

**Project Cost:** \$36,413

**Tax District:** 100 – Port Royal Island

**Council District:** 9

**Drainage/Water Quality Issue:** During rain events there was flooding on Harding Street and Taft Street.

**Resolution:** This project cleared 480 feet of maintenance access and cleaned out 230 feet of outfall ditch. The Utility also installed 260 feet of outfall pipe, one flap gate, two property drain pipes, and one catch basin. Additionally, the Utility installed stones and applied grass for stabilization.

**Area Benefited:** This project alleviated flooding and provided drainage for Taft Street and portions of Harding Street.

**Before**



**During**



**After**







1 inch = 96 feet

**Project:**  
Harding Street  
Outfall

**Activity:** Pipe  
Installation

**Project #:**  
2009-082

**Township:**  
Port Royal Island

**Completed:**  
February 2009

| Legend        |           |
|---------------|-----------|
| Drainage Type |           |
|               | River     |
|               | Stream    |
|               | Outfall   |
|               | Lateral   |
|               | Roadside  |
|               | Crossline |
|               | DW        |
|               | Access    |
|               | Piped     |
|               | Bleeder   |
|               | Parcels   |

Date Print: 6/25/09





## Stormwater Utility

### Project Report

#### Milledge Village Road/Glaze Drive

**Project Number:** 2009-100

**Start Month/Year:** February 2009

**Completion Month/Year:** February 2009

**Project Cost:** \$39,021

**Tax District:** 100 – Port Royal Island

**Council District:** 8

**Drainage/Water Quality Issue:** There were blockages throughout the roadside ditches causing water not to drain.

**Resolution:** This project cleaned out 7,200 feet of roadside ditch. The Utility also installed three driveway pipes and cleaned out one catch basin, four crossline pipes, sixty driveway pipes, and 340 feet of roadside pipe. In addition, the Utility applied grass for stabilization.

**Area Benefited:** This project provided drainage for Milledge Village Road and Glaze Drive.

**Before**



**During**



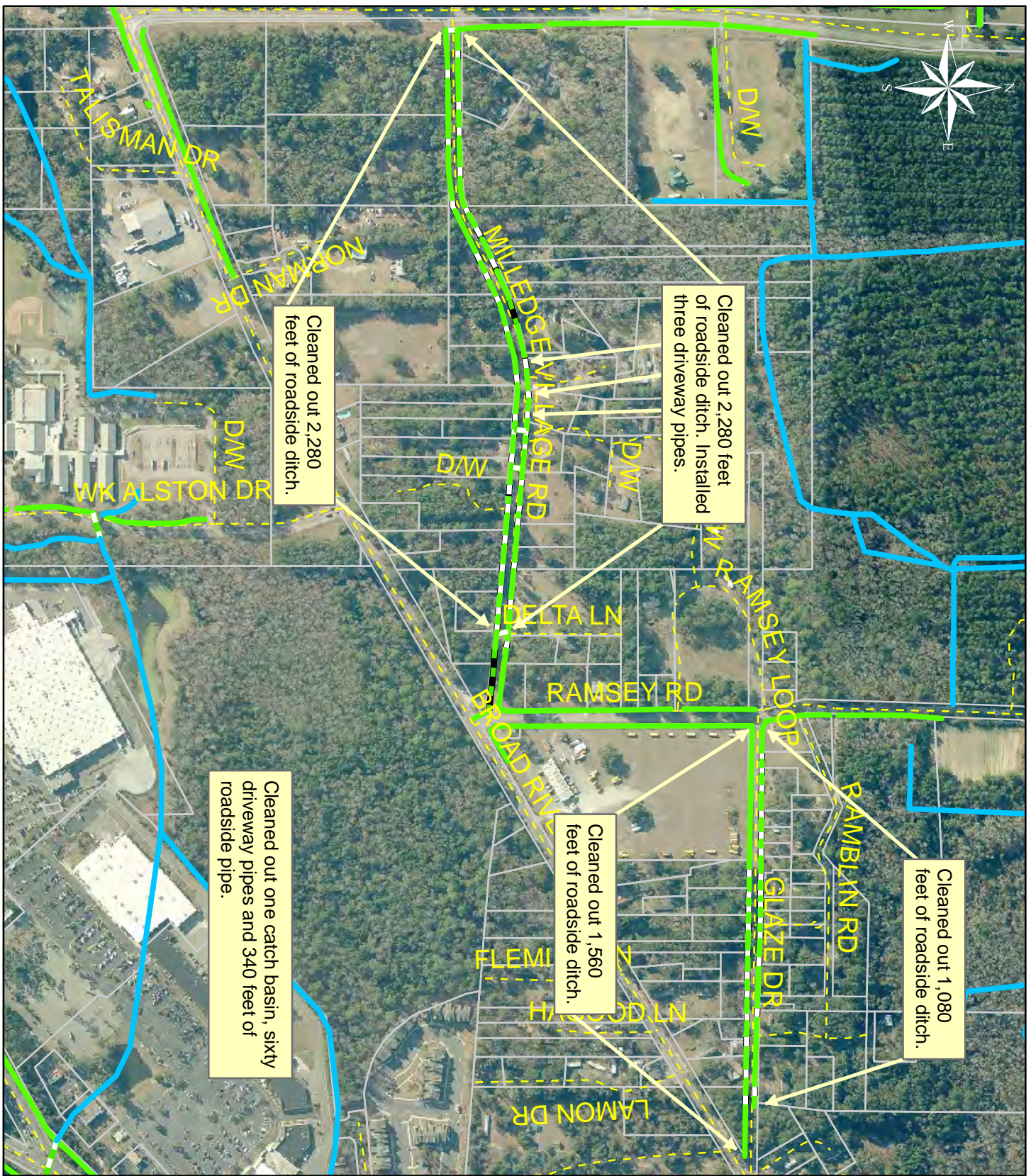
**After**







1 inch = 504 feet



Cleaned out 2,280 feet of roadside ditch.

Cleaned out 2,280 feet of roadside ditch. Installed three driveway pipes.

Cleaned out one catch basin, sixty driveway pipes and 340 feet of roadside pipe.

Cleaned out 1,560 feet of roadside ditch.

Cleaned out 1,080 feet of roadside ditch.

| Legend |               |
|--------|---------------|
|        | River         |
|        | Stream        |
|        | Outfall       |
|        | Lateral       |
|        | Roadside      |
|        | Roadside Pipe |
|        | Crossline     |
|        | D/W           |
|        | Access        |
|        | Piped         |
|        | Bleeder       |
|        | Parcels       |

**Project:**  
Milledge Village Road/Glaze Drive

**Activity:** Ditch Maintenance

**Project #:** 2009-100

**Township:** Port Royal Island

**Completed:** February 2009





## Stormwater Utility

### *Project Report*

#### St Helena Island Bush Hog

**Project Number:** 2009-145

**Start Month/Year:** May 2008

**Completion Month/Year:** February 2009

**Project Cost:** \$37,478

**Tax District:** 300 – St. Helena Island

**Council District:** 5

**Drainage/Water Quality Issue:** The drainage infrastructure requires periodic mowing maintenance to function as designed. This controls woody growth (trees) and prevents blockages that could require a major cleaning effort due to system failure and damage to surrounding areas.

**Resolution:** Routine maintenance was completed for 80,610 feet of maintenance access and 4,870 feet of roadside ditches within the drainage system on St. Helena Island.

**Area Benefited:** This project provided routine maintenance for the following areas: Drop Off Center, Warsaw Island Road, Polawana Road, Eddings Point Road, Seaside Road, Tropicana Road, Shiney Road, White Sands Circle, Luther Warren Drive, Ann Fripp Area, Adam Street, Peaches Hill Circle, Scott Hill Road, David Green Road, Storyteller Road, Major Road, Ball Park Road, Ernest Drive, Halifax Drive, Mattis Road, Pineland Avenue, Sea Island Parkway, Airport Road, Faith Memorial Outfall, and others.

**Before**



**During**



**After**







## Stormwater Utility

### *Project Report*

Adams Circle

**Project Number:** 2009-109

**Start Month/Year:** February 2009

**Completion Month/Year:** March 2009

**Project Cost:** \$34,013

**Tax District:** 100 – Port Royal Island

**Council District:** 9

**Drainage/Water Quality Issue:** There were erosion issues in the roadside ditches and at the crossline pipe. Also, the access and easement for the outfall ditch was narrow, preventing the outfall ditch from being routinely cleaned out.

**Resolution:** This project cleared 200 feet of maintenance access and outfall ditch. The Utility also installed one catch basin, 140 feet of outfall pipe, one access pipe, and 20 feet of roadside pipe. In addition, the Utility installed stones and applied grass for stabilization.

**Area Benefited:** This project corrected erosion issues and provided drainage for portions of Adams Circle and surrounding properties.

**Before**



**During**



**After**







1 inch = 67 feet



**Project:**  
Adams Circle

**Activity:** Drainage Improvement

**Project #:** 2009-109

**Township:**  
Port Royal Island

**Completed:**  
March 2009

| Legend        |               |
|---------------|---------------|
| Drainage Type |               |
|               | River         |
|               | Stream        |
|               | Outfall       |
|               | Lateral       |
|               | Roadside      |
|               | Roadside Pipe |
|               | Crossline     |
|               | D/W           |
|               | Access        |
|               | Piped         |
|               | Bleeder       |
|               | Parcels       |





## Stormwater Utility

### *Project Report*

#### Forest Field Road Outfall

**Project Number:** 2009-073

**Start Month/Year:** December 2008

**Completion Month/Year:** March 2009

**Project Cost:** \$109,926

**Tax District:** 100 – Port Royal Island

**Council District:** 9

**Drainage/Water Quality Issue:** There was standing and stagnant water in the outfall ditches from Forest Field Road to Quarter Horse Road. In addition, there was flooding of outfall ditches and surrounding properties from Quarter Horse Road to St. Paul's Road.

**Resolution:** This project mowed 150 feet of outfall ditch and reconstructed 4,960 feet of maintenance access and 5,110 feet of outfall ditch. The Utility also installed eight access pipes and eight property drain pipes to correct elevation. In addition, the Utility cleaned out one catch basin, 90 feet of outfall pipe, and 220 feet of roadside pipe. Lastly, the Utility installed stones and applied grass for stabilization.

**Area Benefited:** This project reduced drainage issues within the Forest Field Subdivision. It also provided drainage for portions of Forest Field Subdivision, St. Paul's Road, and Josephine Road.

**Before**



**During**



**After**





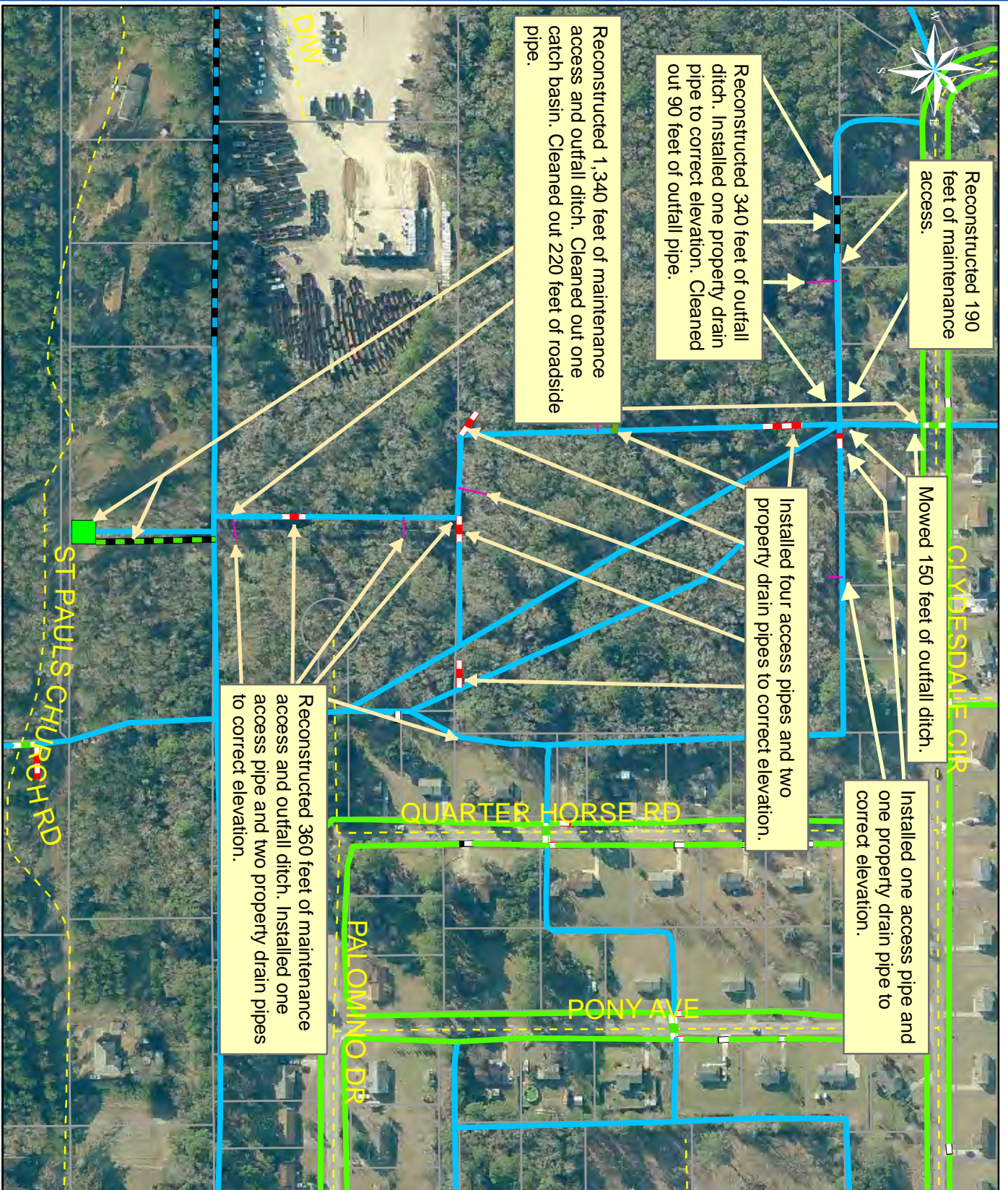
**Project:**  
Forest Field Road  
Map 1

**Activity:** Drainage  
Improvement

**Project #:**  
2009-073

**Township:**  
Port Royal Island

**Completed:**  
March 2009



**Legend**  
206

- River
- Stream
- Outfall
- Lateral
- Roadside
- Crossline
- DW
- Access
- Piped
- Bleeder
- Parcels



**Project:**  
Forest Field Outfall  
Map 2

**Activity:** Drainage  
Maintenance

**Project #:**  
2009-073

**Township:**  
Port Royal Island

**Completed:**  
March 2009



**Legend**  
207

| Drainage Type |               |
|---------------|---------------|
|               | River         |
|               | Stream        |
|               | Outfall       |
|               | Lateral       |
|               | Roadside      |
|               | Roadside Pipe |
|               | Crossline     |
|               | D/W           |
|               | Access        |
|               | Piped         |
|               | Bleeder       |
|               | Parcels       |



1 inch = 368 feet

Date Print: 8/31/09





## Stormwater Utility

### *Project Report*

#### Lady's Island Bush Hog

**Project Number:** 2009-25

**Start Month/Year:** September 2008

**Completion Month/Year:** March 2009

**Project Cost:** \$23,451

**Tax District:** 200 – Lady's Island

**Council District:** 7

**Drainage/Water Quality Issue:** The drainage infrastructure requires periodic mowing maintenance to function as designed. This controls woody growth (trees) and prevents blockages that could require a major cleaning effort due to system failure and damage to surrounding areas.

**Resolution:** Routine maintenance was completed for 32,990 feet of maintenance access, 2,950 feet of outfall ditches, and 3,090 feet of roadside ditches within the drainage system on Lady's Island. This project also swept 1,430 feet of road.

**Area Benefited:** This project provided routine maintenance for the following areas: Eustis Landing Road, Alumni Road, Fairfield Road, Faculty Drive, Little Capers Road, Chowan Creek Bluff, Hewlett Drive, Airport Circle, Holly Hall Road, Token Lane, Braeburn Lane, Honeysuckle Lane, Winthrop Street, Deveaux Road, Springfield Road, Francis Marion Circle, Brickyard Point Road, Sheppard Lane, Huron Drive, Small Hill Road, and others.

**Before**



**During**



**After**







## Stormwater Utility

### *Project Report*

#### Port Royal Island Bush Hog

**Project Number:** 2009-001

**Start Month/Year:** March 2009

**Completion Month/Year:** March 2009

**Project Cost:** \$47,623

**Tax District:** 100 – Port Royal Island

**Council District:** 8

**Drainage/Water Quality Issue:** The drainage infrastructure requires periodic mowing maintenance to function as designed. This controls woody growth (trees) and prevents blockages that could require a major cleaning effort due to system failure and damage to surrounding areas.

**Resolution:** Routine maintenance was completed for 100,500 feet of outfall ditches and 3,070 feet of roadside ditches within the drainage system on Port Royal Island.

**Area Benefited:** This project provided routine maintenance for the following areas: County Shed Road, Deloach Road, Burton Wells Road, Walker Circle, Audubon Subdivision, Clarendon Road, Shein Loop, Pinewood Circle, Parker Drive, Bay Pines Road, Providence Road, Powell Drive, Forest Field Subdivision, Pine Grove Road, Brilliant Lane, Hale Drive, Leo Green Road, Roseida Road, Poppy Hill Road, Mroz Road, Lawson Road, Lambert Outfall, Salem Drive, Irongate Subdivision, John Davis Court, Mulrain Road, and others.

**Before**



**During**



**After**







## Stormwater Utility

### *Project Report*

L.H. Nelson Drive/Hale Drive

**Project Number:** 2009-114

**Start Month/Year:** January 2009

**Completion Month/Year:** April 2009

**Project Cost:** \$60,592

**Tax District:** 100 – Port Royal Island

**Council District:** 9

**Drainage/Water Quality Issue:** During rain events, there was road flooding of L.H. Nelson Drive.

**Resolution:** This project cleared 250 feet of maintenance access, and cleaned out 1,590 feet of outfall ditch and 3,350 feet of roadside ditch. The Utility also installed twin crossline pipes, twin access pipes, one access pipe, upsized one driveway pipe, replaced four driveway pipes, and reinstalled one access pipe to the correct elevation. Additionally, the Utility repaired a washout and installed stones and applied grass for stabilization.

**Area Benefited:** This project alleviated flooding and provided drainage for Hale Drive, Grant Street, and Jay Street and portions of L. H. Nelson Drive, Jefferson Drive, and Savannah Highway. The project also provided drainage for the surrounding properties.

**Before**



**During**



**After**







1 inch = 375 feet

**Project:**  
L.H. Nelson Drive  
and Hale Drive  
Map 1

**Activity:** Ditch  
Maintenance

**Project #:**  
2009-114

**Township:**  
Port Royal Island

**Completed:**  
April 2009

**Legend**

| Drainage Type |               |
|---------------|---------------|
|               | River         |
|               | Stream        |
|               | Outfall       |
|               | Lateral       |
|               | Roadside      |
|               | Roadside Pipe |
|               | Crossline     |
|               | DW            |
|               | Access        |
|               | Piped         |
|               | Bleeder       |

Date Print: 3/30/10





**Project:**  
L.H. Nelson Drive  
and Hale Drive  
Map 2

**Activity:** Ditch  
Maintenance

**Project #:**  
2009-114

**Township:**  
Port Royal Island

**Completed:**  
April 2009

| Legend        |               |
|---------------|---------------|
| Drainage Type |               |
|               | River         |
|               | Stream        |
|               | Outfall       |
|               | Lateral       |
|               | Roadside      |
|               | Roadside Pipe |
|               | Crossline     |
|               | D/W           |
|               | Access        |
|               | Piped         |
|               | Bleeder       |

Date Print: 3/30/10





## Stormwater Utility

### *Project Report*

#### Royal Pines Subdivision Phase I

**Project Number:** 2009-116

**Start Month/Year:** March 2009

**Completion Month/Year:** April 2009

**Project Cost:** \$36,205

**Tax District:** 200 – Lady's Island

**Council District:** 7

**Drainage/Water Quality Issue:** The access and easement for the drainage system was narrow and thus preventing the outfall ditch from being routinely cleaned out.

**Resolution:** This project mowed 450 feet of outfall ditch and maintenance access. The Utility also installed 260 feet of outfall pipe, two access pipes, and extended one driveway pipe. Additionally, the Utility repaired two washouts and installed stones and grass for stabilization.

**Area Benefited:** This project provided drainage for portions of Thomas Sumpter Road and surrounding properties.

**Before**



**During**



**After**











## Stormwater Utility

### Project Report

City of Beaufort - Battery Shores Phase I & II

**Project Number:** 2009-110

**Start Month/Year:** May 2009

**Completion Month/Year:** May 2009

**Project Cost:** \$63,484

**Tax District:** 120 – City of Beaufort

**Council District:** 9

**Drainage/Water Quality Issue:** During rain events, there was flooding on a portion of Otter Circle and Pine Martin Road.

**Resolution:** This project reconstructed the pond, upsized one crossline pipe, installed one catch basin, upsized 180 feet of outfall pipe, and extended 40 feet of outfall pipe. The Utility also installed grass, straw mat, stones, and applied grass for stabilization.

**Area Benefited:** This project alleviated flooding and provided drainage for portions of Otter Circle, Pine Martin Road, and surrounding properties.

**Before**



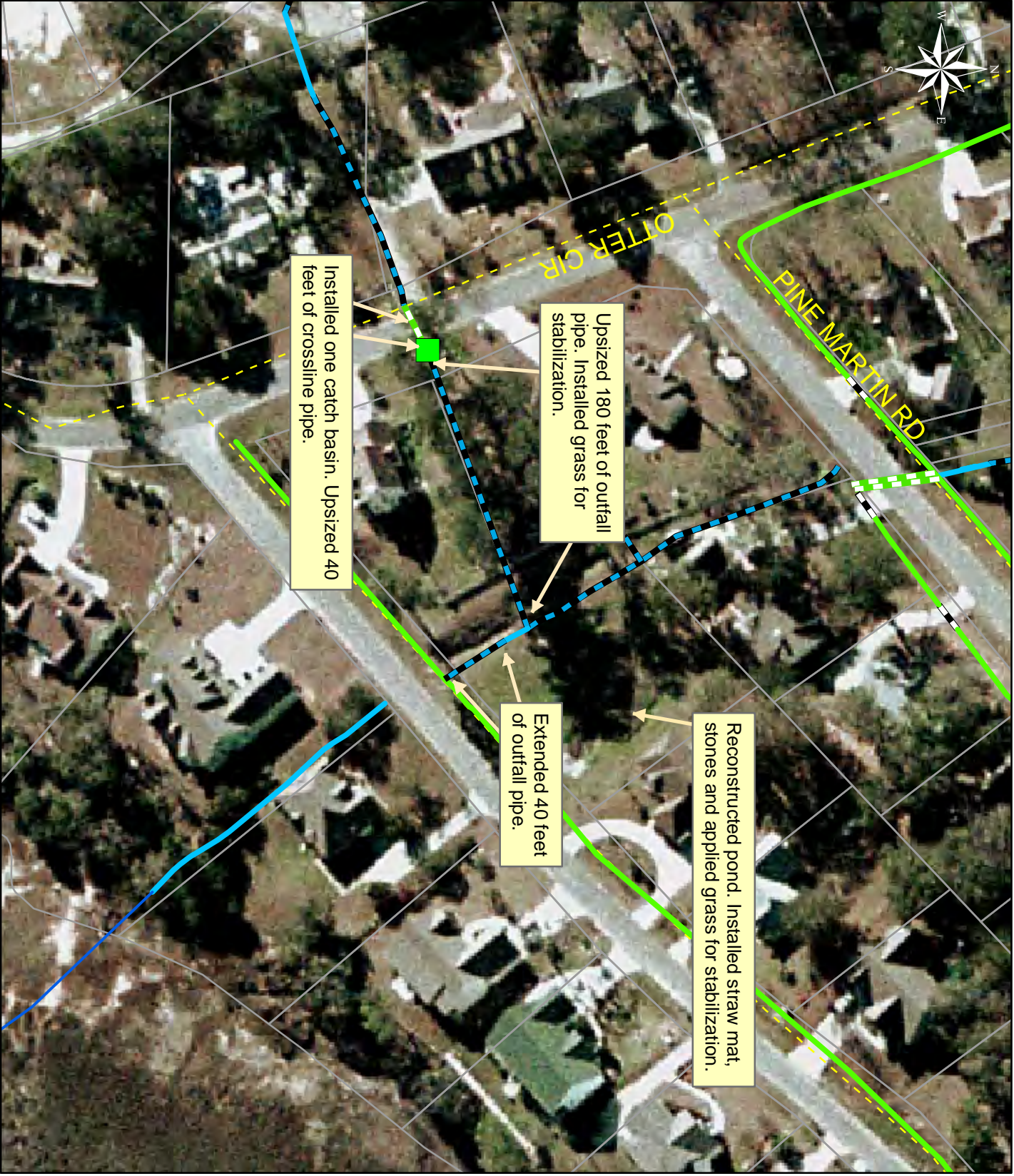
**During**



**After**







1 inch = 96 feet

**Project:**  
 City of Beaufort -  
 Battery Shores  
 Phase I & II

**Activity:** Drainage  
 Maintenance

**Project #:**  
 2009-110

**Township:** City  
 of Beaufort

**Completed:**  
 May 2009

| Legend        |           |
|---------------|-----------|
| Drainage Type |           |
|               | River     |
|               | Stream    |
|               | Outfall   |
|               | Lateral   |
|               | Roadside  |
|               | Crossline |
|               | D/W       |
|               | Access    |
|               | Piped     |
|               | Bleeder   |
|               | Parcels   |

Date Print: 6/25/09





## Stormwater Utility

### *Project Report*

#### St. Helena Island Bush Hog

**Project Number:** 2009-152

**Start Month/Year:** April 2009

**Completion Month/Year:** May 2009

**Project Cost:** \$28,698

**Tax District:** 300 – St. Helena Island

**Council District:** 5

**Drainage/Water Quality Issue:** The drainage infrastructure requires periodic mowing maintenance to function as designed. This controls woody growth (trees) and prevents blockages that could require a major cleaning effort due to system failure and damage to surrounding areas.

**Resolution:** Routine maintenance was completed for 50,740 feet of outfall ditches and 5,010 feet of roadside ditches within the drainage system on St. Helena Island.

**Area Benefited:** This project provided routine maintenance for the following areas: Scott Hall Road, Peaches Hill Circle, David Green Road, Capers Island Circle, No Man Land Road, Bridgewood Road, Storyteller Road, James Washington Road, Orange Grove Road, Faith Memorial Church, Penn Center, Queen Road, Ernest Drive, St Helena Park, Halifax Road, Toomer Road, Tombee Road, Kelis Lane, Ann Fripp Community, Cee Cee Road, Seaside Road, White Sand, and the Sea Island Parkway.

**Before**



**During**



**After**







## Stormwater Utility

### Project Report

Capehart Circle

**Project Number:** 2009-003

**Start Month/Year:** March 2009

**Completion Month/Year:** June 2009

**Project Cost:** \$70,048

**Tax District:** 100 - Port Royal Island

**Council District:** 6

**Drainage/Water Quality Issue:** There was flooding of adjacent properties and standing water in the roadside and outfall ditches. This was a joint project with the Marine Corps Air Station.

**Resolution:** This project cleared 420 feet of outfall ditch and maintenance access, cleaned out 400 feet of outfall ditch and maintenance access, and cleaned out 6,070 feet of roadside ditch. The Utility also installed two access pipes, two driveway pipes, upsized 20 feet of outfall pipe, and reinstalled one driveway pipe to correct elevation. Additionally, the Utility cleaned out fifty-nine driveway pipes, seven crossline pipes, one access pipe, 100 feet of outfall pipe, and 50 feet of roadside pipe. Lastly, the Utility installed stones and applied grass for stabilization.

**Area Benefited:** This project alleviated flooding and provided drainage for Capehart Circle, Capehart Drive, Capehart Lane, and portions of Mroz Road and surrounding properties.

**Before**



**During**



**After**





Cleared 170 feet of outfall ditch and maintenance access. Cleaned out 150 feet of outfall ditch and maintenance access.

Installed one access pipe. Installed stones and applied grass for stabilization.

Cleaned out three crossline pipes.

Cleaned out fifty-nine driveway pipes.

Reinstalled one driveway pipe to correct elevation.

Cleaned out two crossline pipes.

Cleaned out one crossline pipe.

Installed two driveway pipes.

Cleaned out 50 feet of roadside pipe.

Cleaned out one crossline pipe.

Installed and cleaned out one access pipe.

Cleared and cleaned out 250 feet of outfall ditch and maintenance access.



**Project:**  
Capehart Circle  
Map 1

**Activity:** Drainage  
Maintenance

**Project #:**  
2009-003

**Township:**  
Port Royal Island

**Completed:**  
June 2009

**Legend**

**Drainage Type**

- River
- Stream
- Outfall
- Lateral
- Roadside
- Roadside Pipe
- Crossline
- D/W
- Access
- Piped
- Bleeder
- Parcels



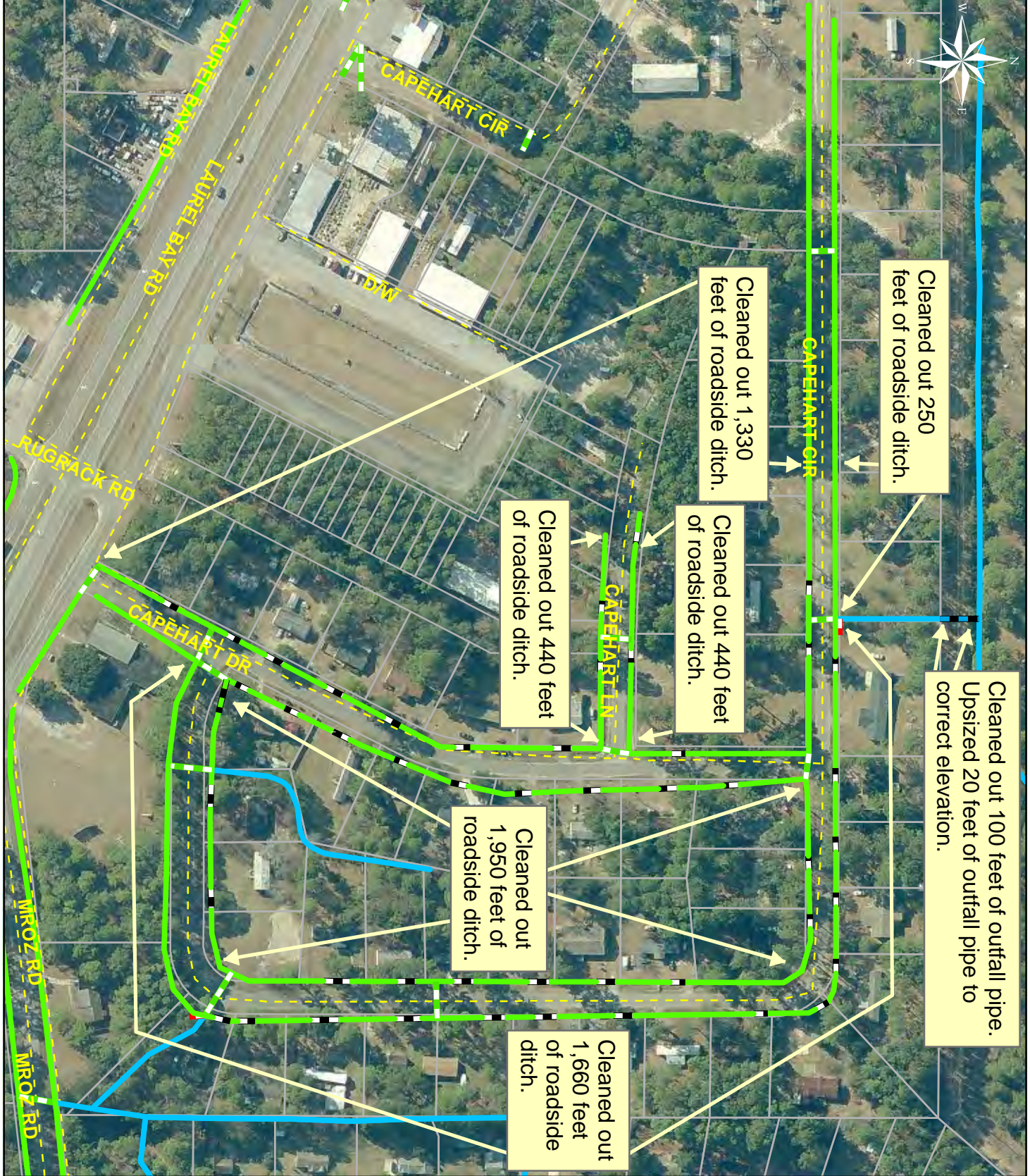
1 inch = 193 feet

Date Print: 7/15/09





1 inch = 205 feet



**Project:**  
Capehart Circle  
Map 2

**Activity:** Drainage  
Maintenance

**Project #:**  
2009-003

**Township:**  
Port Royal Island

**Completed:**  
June 2009

| Legend        |               |
|---------------|---------------|
| Drainage Type |               |
|               | River         |
|               | Stream        |
|               | Outfall       |
|               | Lateral       |
|               | Roadside      |
|               | Roadside Pipe |
|               | Crossline     |
|               | D/W           |
|               | Access        |
|               | Piped         |
|               | Bleeder       |
|               | Parcels       |

Date Print: 7/15/09





## Stormwater Utility

### *Project Report*

#### St. Helena Island Bush Hog

**Project Number:** 2009-132

**Start Month/Year:** June 2009

**Completion Month/Year:** June 2009

**Project Cost:** \$20,389

**Tax District:** 300 – St. Helena Island

**Council District:** 5

**Drainage/Water Quality Issue:** The drainage infrastructure requires periodic mowing maintenance to function as designed. This controls woody growth (trees) and prevents blockages that could require a major cleaning effort due to system failure and damage to surrounding areas.

**Resolution:** Routine maintenance was completed for 32,760 feet of outfall ditches and 2,910 feet of roadside ditches within the drainage system on St. Helena Island.

**Area Benefited:** This project provided routine maintenance for the following areas: Shiney Road, Seaside Road, Tropicana Road, Simmons Road, John Fripp Circle, Eddings Point Road, Mary Jenkins Circle, Polowana Road, Sea Island Parkway Drop-off Center, Mattis Drive, James Grant, Warsaw Road, Chowan Creek Bluff, Eustis Landing Road, Gardner Road, J.B. Lane, Major Road, and Luther Warren Road.

**Before**



**During**



**After**

